



CAROL ALT

HEIGHT 179 - 5' 10.5"

BUST 90 - 35"

WAIST 77 - 30"

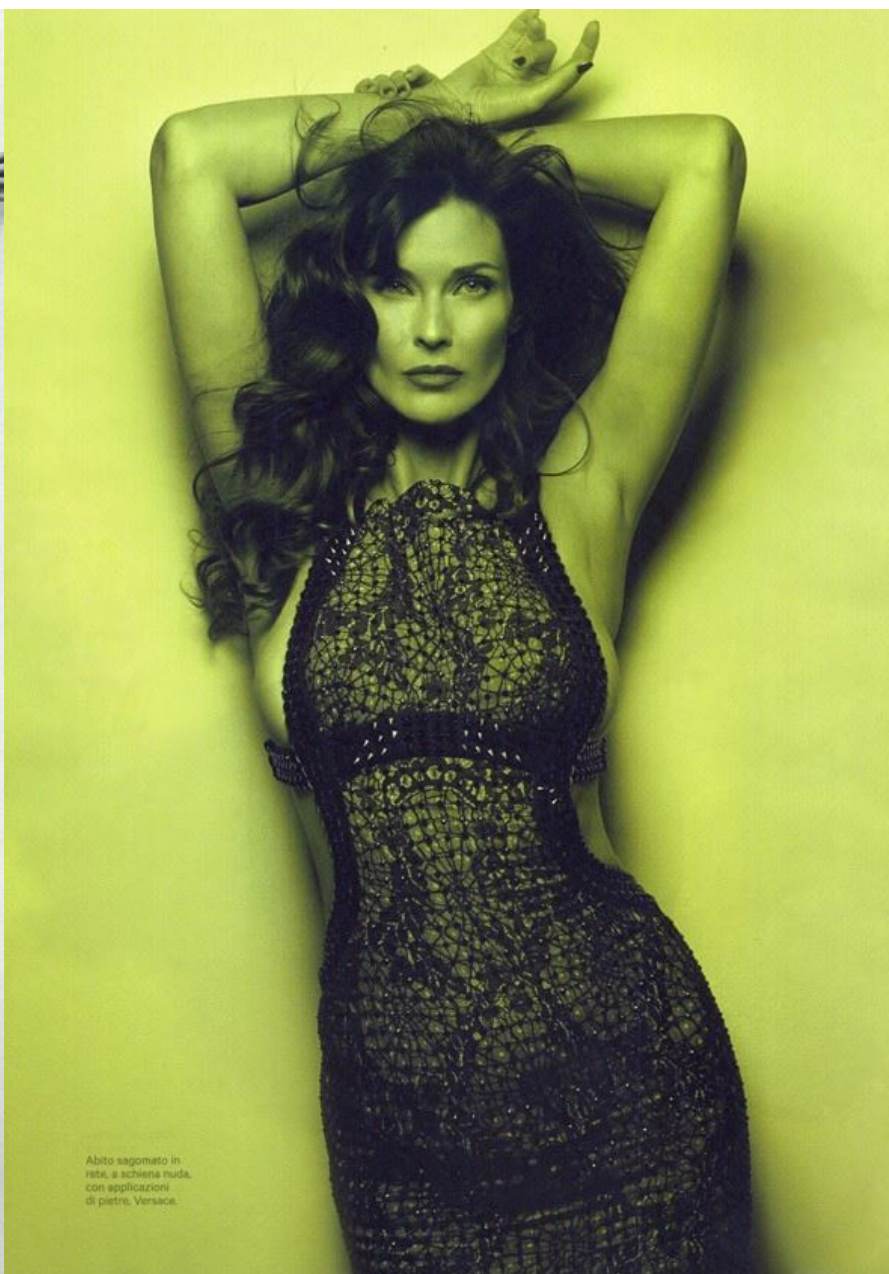
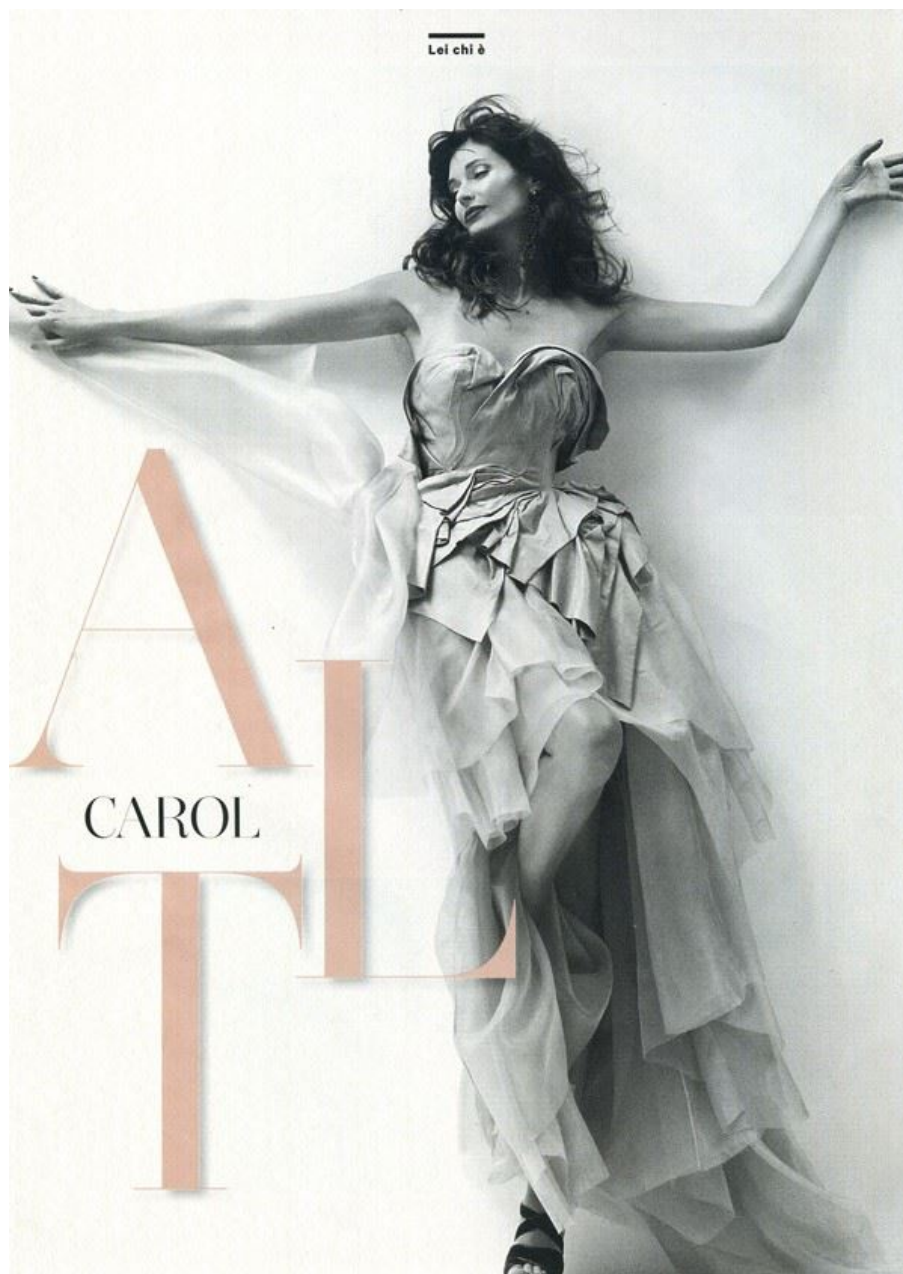
HIPS 94 - 37"

SHOES 38 - 6.5

HAIR COLOR **BROWN - CASTANI**







Lei chi è



Abito con bustino
e gonna a
teli, Blumarine.
Sandali Gucci.
Orecchini Chopard.



